



September 27, 2023

Olivenhain Evacuation Plan

Introduction & Rationale

- Brief overview of Olivenhain's geography and risk factors.
 - 5 Square Miles
 - Approx. 6,200 residents
 - Approx. 2,300 housing units
 - Over 380 horses
 - Very High Fire Hazard Severity Zone (VHFHSZ)
 - Older Building Construction
 - Access and Egress are limited
 - Vegetation clearance
 - Fuel, Topography, and Weather



Fire History

Recent events necessitating the creation of an evacuation plan

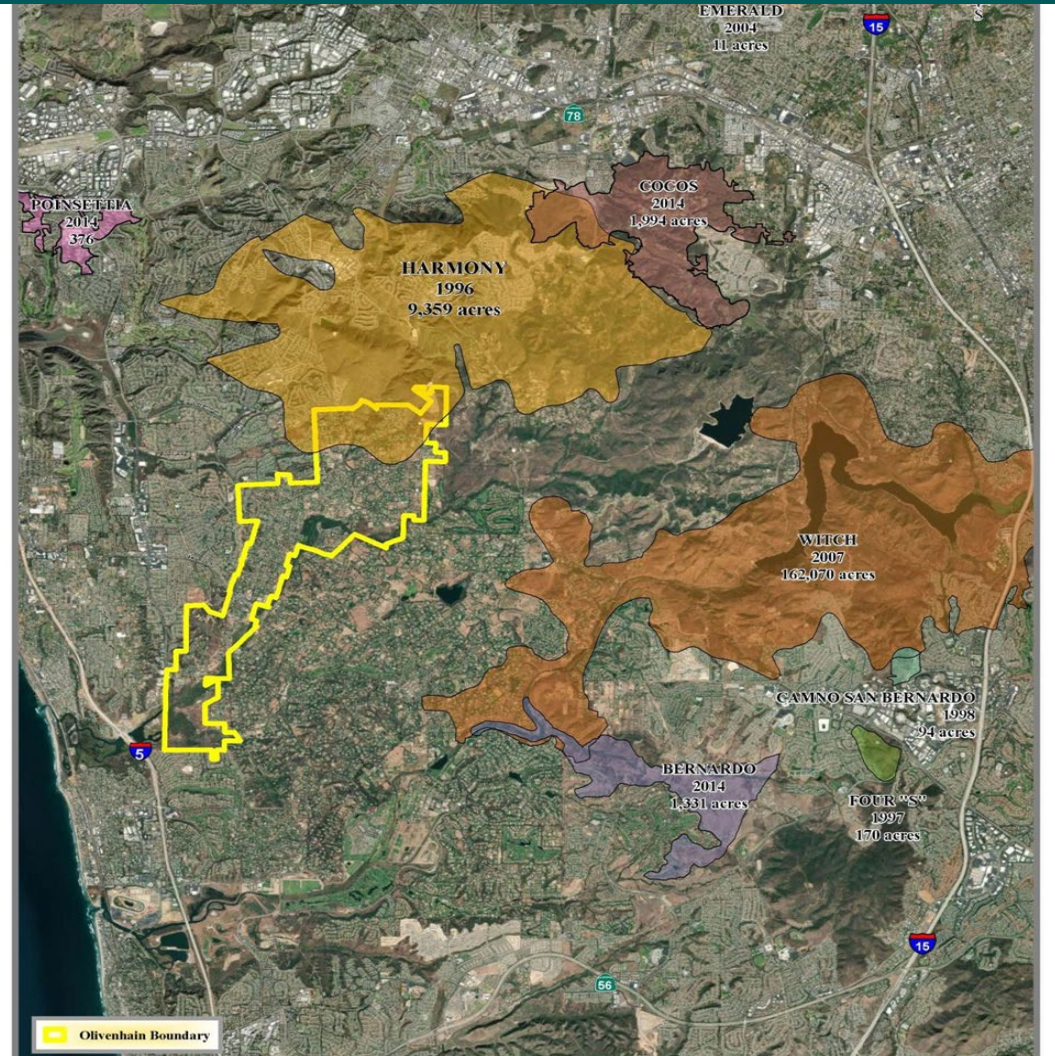
Harmony Fire – 1996

Witch Fire – 2007

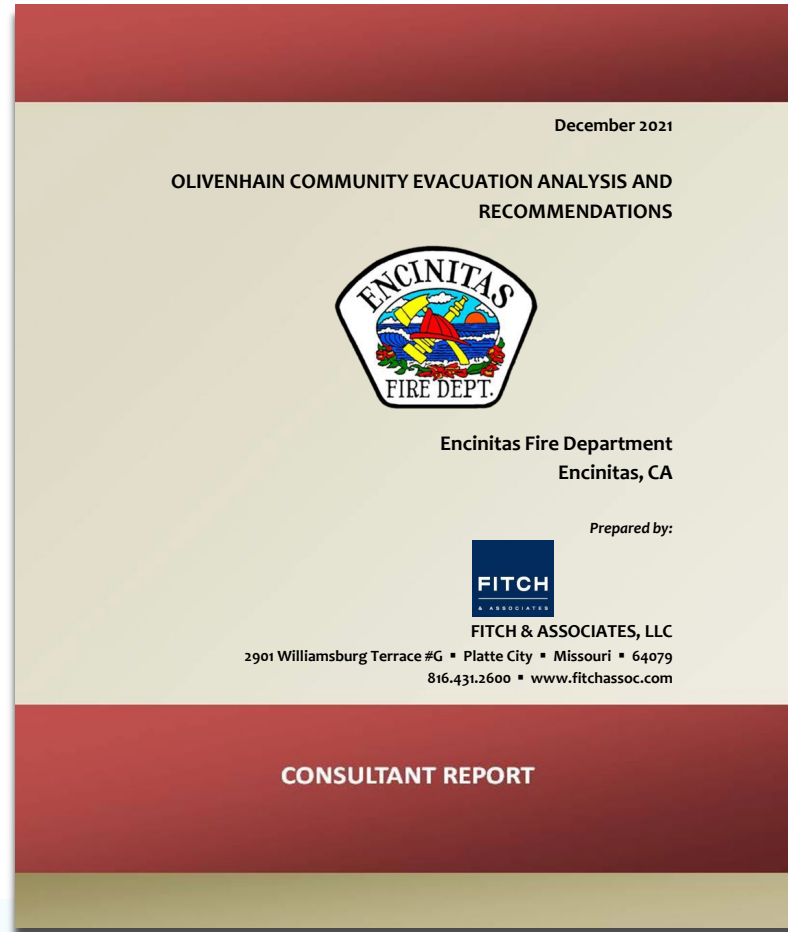
Cocos Fire – 2014

Poinsettia Fire - 2014

Bernardo Fire - 2014



Olivenhain Evacuation Plan

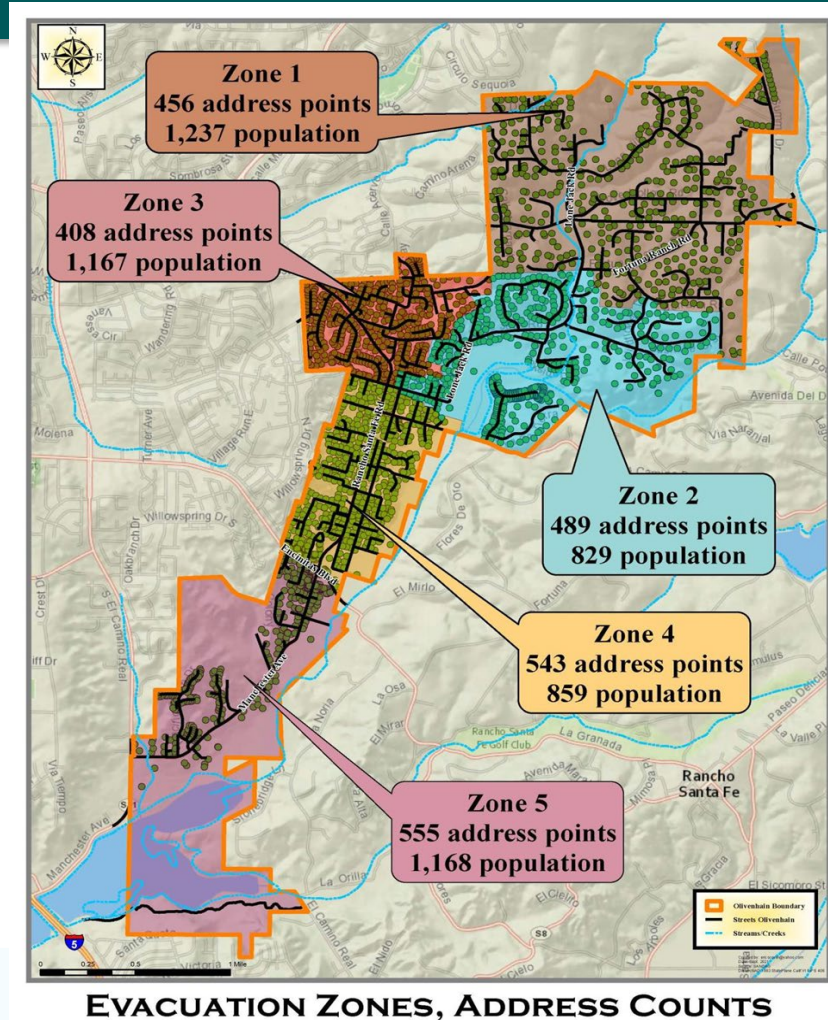


Collaboration with Key Stakeholders

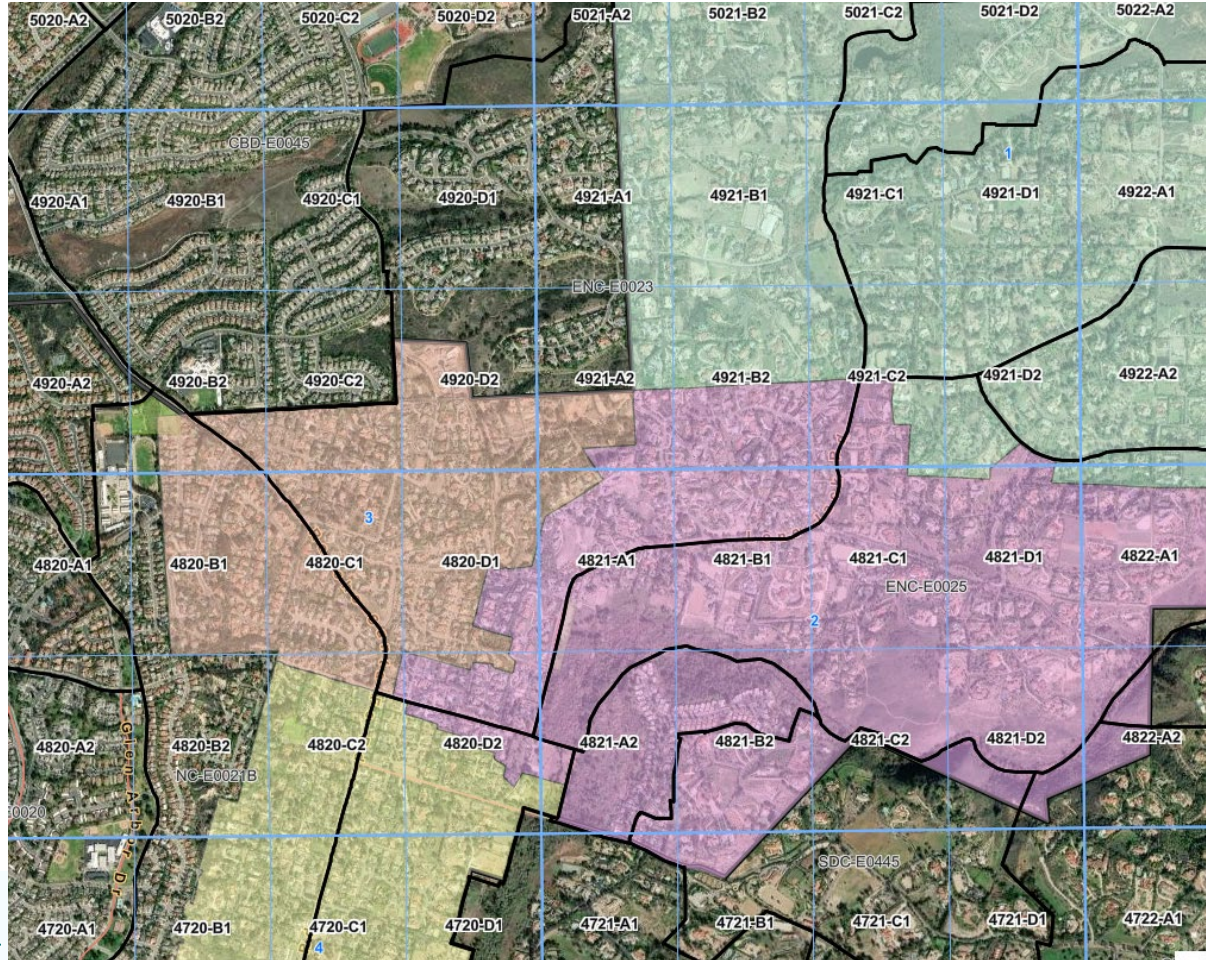
- Fitch & Associates Meetings
 - June 20, 2022
 - June 21, 2022
 - July 09, 2022
- Olivenhain Fire Safe Council
 - January 18, 2023 (ZOOM)
 - March 6, 2023
 - June 8, 2023 – Provided New Edits
 - Community Wildland Protection Plan



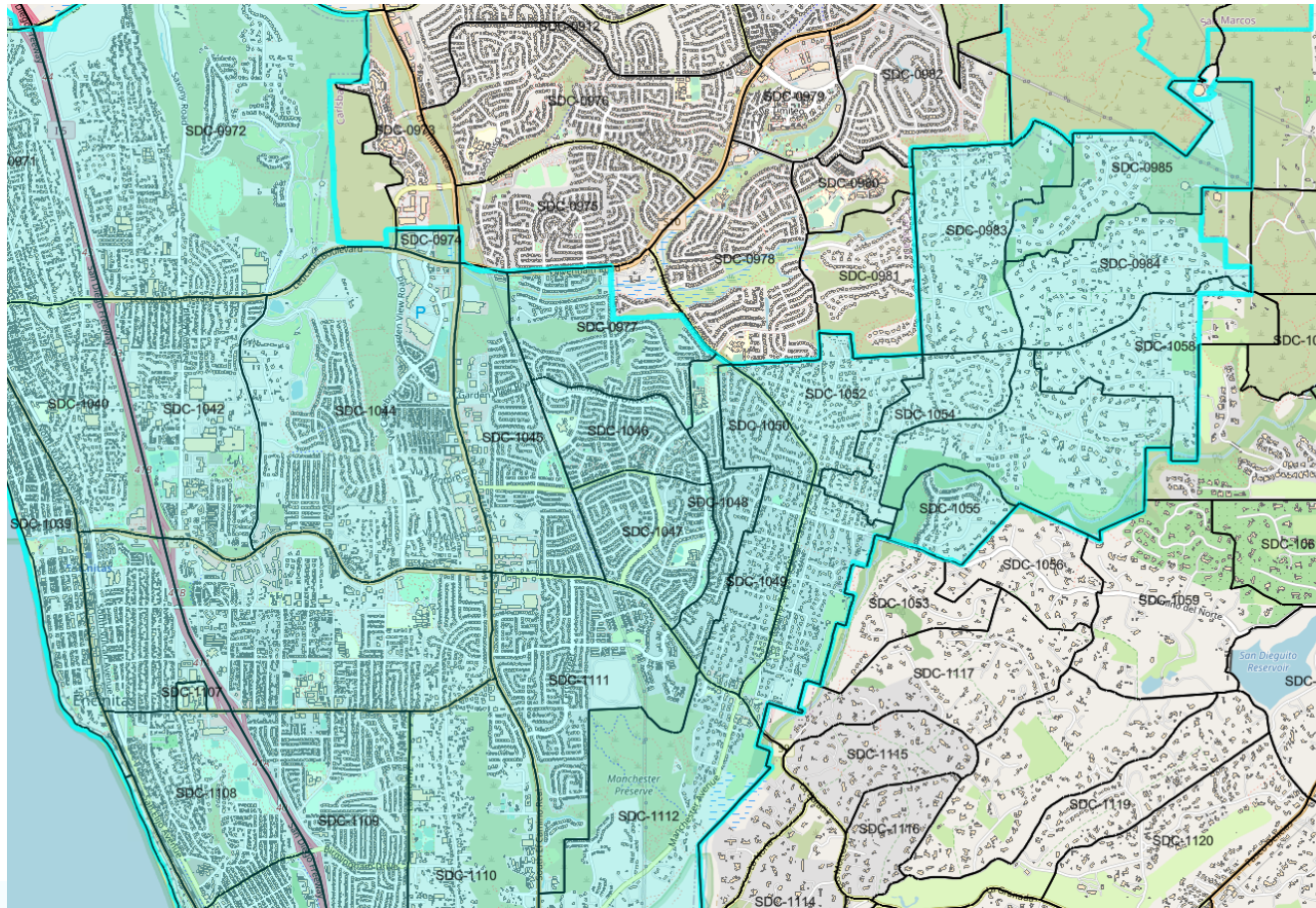
Key Evacuation Zones



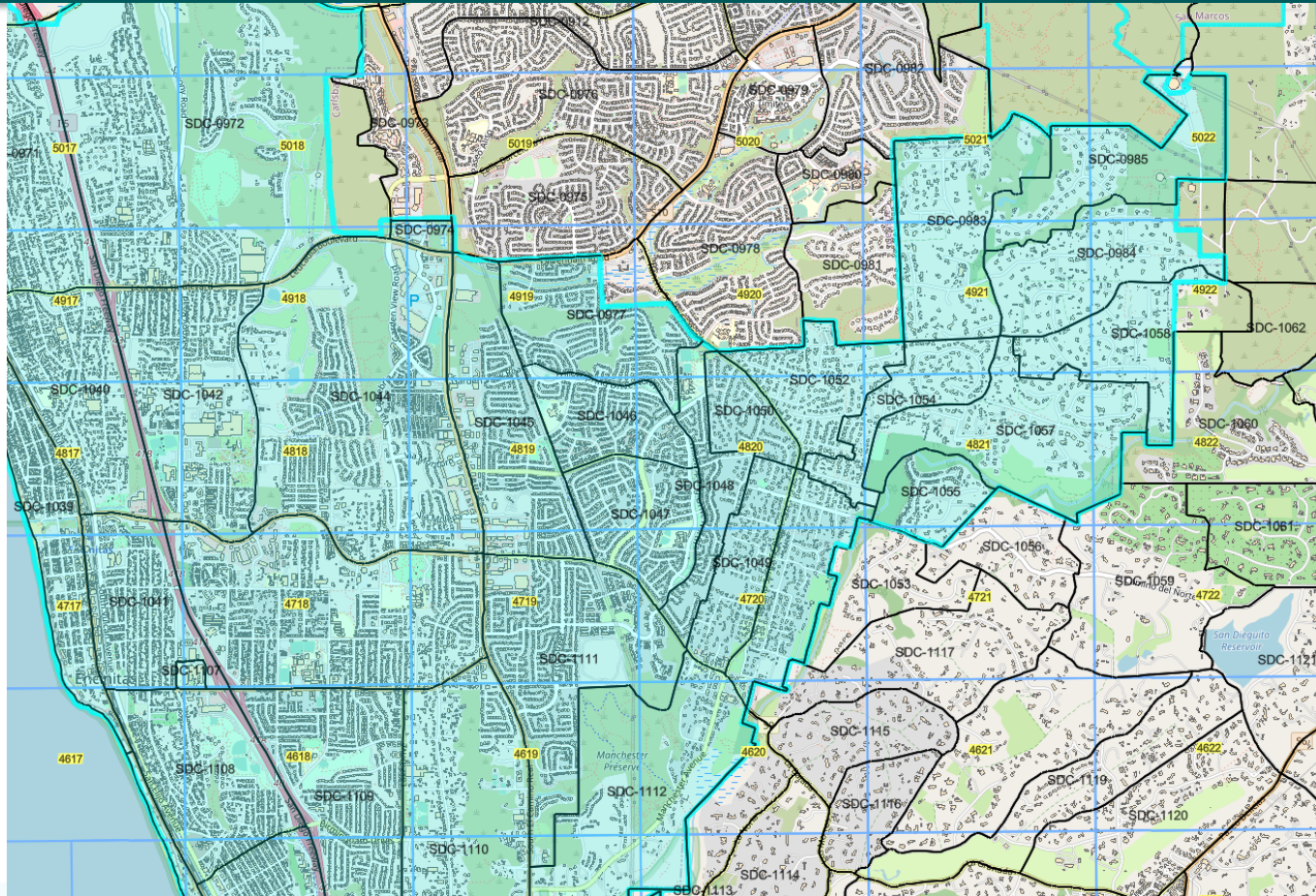
San Diego County Grid Map Layover



ZoneHaven



ZoneHaven with Public Safety Grids



Scenario "A" Event:

Wildfire is outside city limits, approaching west from Harmony Grove or Rancho Santa Fe

Exposed population north of Fortuna Ranch Road including Bumann Road will be evacuated via the Double LL Ranch Road gate. Evacuation routes are as follows:

S/B on Copper Crest Road (to Lone Jack Road)
Southwest on Lone Hill Lane (to Lone Jack Road)
S/B on Lone Jack Road
S/B on Lone Hill Lane (to Dove Hollow Road)
W/B on Dove Hollow Road
W/B on Double LL Ranch Road
S/B on Rancho Summit Drive (to Fortuna Ranch Road)
W/B on Bumann Road to Fortuna Ranch Road to Lone Jack Road

Scenario "A" Event:

Wildfire is outside city limits, approaching west from Harmony Grove or Rancho Santa Fe

Exposed population south of Fortuna Ranch Road will be evacuated via Lone Jack Road to Rancho Santa Fe Road accessing Interstate 5 via Manchester Avenue or Encinitas Blvd as directed by Law Enforcement or Fire Personnel:

South on Wildflower Drive to Wildflower Valley Drive west to Lone Jack Road
W/B on El Camino Del Norte
S/B on Lone Jack Road to El Camino Del Rancho
W/B on Camino Del Rancho
S/B on Rancho Santa Fe Road

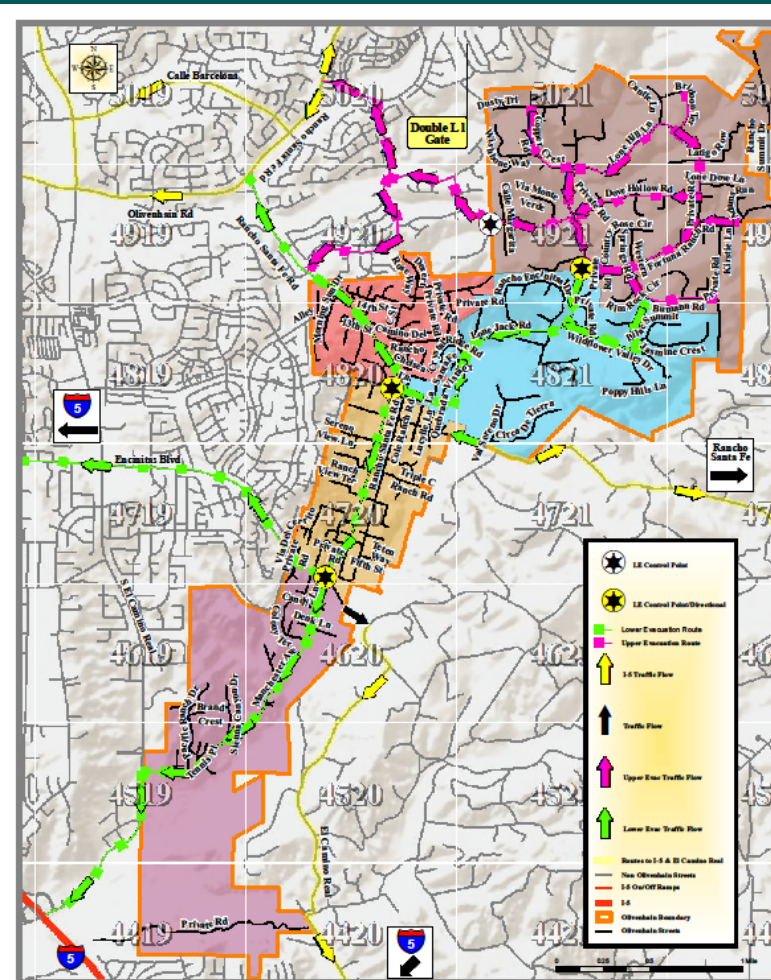
Scenario "A" Event:

Wildfire is outside city limits, approaching west from Harmony Grove or Rancho Santa Fe

- Traffic exiting Lone Jack Road will be directed south (using Rancho Santa Fe Road) to Interstate 5 via Manchester Avenue or Encinitas Blvd as directed by Law Enforcement or Fire Personnel.
- Traffic exiting El Camino Del Norte and streets to the south will be directed south on Rancho Santa Fe Road, unless Law Enforcement and Fire Personnel determine North Bound evacuation traffic is appropriate.
- Due to the narrow roadways and need to possibly deploy firefighting resources to the affected areas, contra-flow operations are not an effective option for evacuating residents but can be an option if Law Enforcement deems it efficient and safe.

Scenario "A" Event:

Wildfire is outside city limits, approaching west from Harmony Grove or Rancho Santa Fe



EVACUATION ROUTES/ZONES - SCENARIO "A"

Scenario “B” Event:

Wildfire is in Escondido Creek in or near city limits

- Riparian zone will resist control given the density and fuel load. Ornamental vegetation around structures and limited defensible space will result in impacts on homes and roadways within 30 to 60 minutes.
- Fire will respond to topography, impacting drainages quickly.
- IC/UC will evaluate current conditions, available resources, and evacuate areas of highest concern; shelter-in-place may be only option for some locations.
- The Incident Commander/Unified Command will use fire behavior tools, knowledge, and experience to determine when and if Evacuation Warnings or Orders are to be issued.
- Review Onshore Wind Scenario.

The following are KEY Decision Point locations for evacuation route direction based on fire behavior:

	Location	SDCO Evac Map	Agency Responsible
1	Double LL Ranch Road and Paseo Esmerado access gate	4921 A-1	Sheriff or Fire Departments (Open Gate)
2	Lone Jack Road and Fortuna Ranch Road	4921 C-2	Sheriff's Department
3	Rancho Santa Fe Road and Lone Jack Road	4820 C-2	Sheriff's Department
4	Rancho Santa Fe Road and Encinitas Boulevard (Closed to N/B traffic onto Rancho Santa Fe Road – traffic signal set to flash)	4720 B-2	Sheriff's Department

Scenario “B” Event:

Wildfire is in Escondido Creek in or near city limits

Exposed residents from Rancho Encinitas Drive and east along Lone Jack Road will exit via the Double LL Ranch Road gate. Potential evacuation routes are as follows:

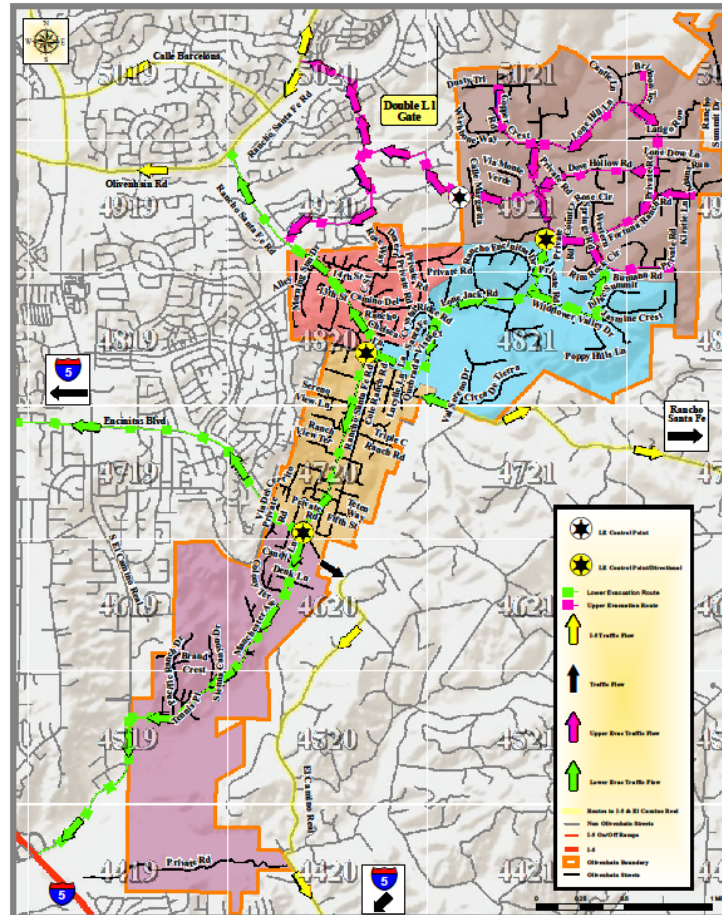
SDCO Evac Map

1	S/B on Lone Jack Road south of Rancho Encinitas Drive	4821 A-1
2	S/B on Val Sereno Drive (to El Camino Del Norte)	4721 A-1
3	W/B on El Camino Del Norte	4721 B-1/A-1
4	E/B on 9 th Street (to Rancho Santa Fe Road)	4820 C-2
5	S/B on Rancho Santa Fe Road	4720 C-1

Exposed population west of Rancho Encinitas Drive along Lone Jack Road will be evacuated via Lone Jack Road and El Camino Del Norte:

SDCO Evac Map

1	S/B on Copper Crest Road (to Lone Jack Road)	4921 C-1
2	Southwest on Lone Hill Lane (to Lone Jack Road)	4921 C-1
3	S/B on Lone Jack Road	4921 C-1
4	S/B on Lone Hill Lane (to Dove Hollow Road)	4921 C-1
5	W/B on Dove Hollow Road	4921 D-1
6	W/B on Double LL Ranch Road	4921 C-1
7	S/B on Rancho Summit Drive (to Dove Hollow Road)	4922 B-1
8	W/B on Fortuna Ranch Road (to Lone Jack Road – North)	4921 C-2
9	North/Northwest on Bumann Road (to Fortuna Ranch Road)	4921 C-1
10	N/B on Wildflower Drive (to Bumann Road)	4921 C-1
11	East on Wildflower Valley Drive (to Lone Jack Road – North)	4821 C-1
12	N/B on Brookside Lane (to Lone Jack Road – North)	4821 B-1
13	N/B on Lone Jack Road from Rancho Encinitas Drive	4821 B-1/ 4921 C-2



EVACUATION ROUTES/ZONES - SCENARIO "B"

Incident Commander Power & Authority

Alternative Evacuation Routes: Morning Sun Gate & Avenida La Posta

The estimated Evacuation Clearance Time is five (5) to six (6) hours. An additional two (2) hours, if available, will be added to each evacuation zone clearance time as a precaution due to the narrow roadways and large animal evacuation needs.

Law Enforcement and Fire Personnel reserve the right to deviate from the planned evacuation route if weather and fire conditions dictate to provide the highest level of safety to the evacuees.

Communication & Warning Systems

1. Alert San Diego <https://www.readysandiego.org/alertsandiego/>
2. Sheriff's Department (SDSD) Emergency Notification System – Wireless Emergency Alert (WEA) <https://www.ctia.org/consumer-resources/wireless-emergency-alerts>
3. Local Emergency Override System (for Cox Cable)
4. Emergency Alert System (EAS) through County Office of Emergency Services (OES)
5. Emergency vehicles equipped with Public Address (PA) systems, including lifeguard vehicles, as well as evacuation high-low tone sirens
6. Sheriff's Department (SDSD) Aerial Support to Regional Enforcement Areas (ASTREA) helicopter PA system
7. Personnel equipped with bull horns
8. City website
9. City social media sites – Facebook, Twitter, Next door
10. Door-to-door canvassing:
 - Emergency officials
 - Volunteers (Community Emergency Response Team (CERT), Senior Patrol)

Events and Emergency Status

Event	Status
Fire Weather Watch	Review plans and procedures
Red Flag Warning	Proactive actions initiated
Wildfire progressing west from Escondido, Poway, or Rancho Bernardo	Consider Evacuation Warning, Phased-Evacuations or an Evacuation Order
Wildfire(s) in San Marcos, Harmony Grove, Elfin Forest, Carlsbad, or Rancho Santa Fe	Reference Scenario “A”(Refer to Map)
Wildfire begins in Olivenhain (Escondido Creek), Rancho Santa Fe	Reference Scenario “B”(Refer to Map)
Wildfire threat has ceased, and affected areas are rendered safe	Reference Annex Q, Section: Activation and Termination (Page 39)

Special Considerations

- Factors affecting evacuation
 - Large Animal Evacuation
 - Schools
 - Care Facilities
 - Limited Egress
 - Vegetation
 - Narrow Streets
 - Adjacent Communities



Ranch View
SENIOR ASSISTED LIVING

Key Support Facilities

- Emergency Operations Center (EOC)
 - Encinitas City Hall
- Mass Care Centers/Shelters
 - Encinitas Community Center - Capacity 318
 - Oak Crest Middle School – Capacity 127
 - San Dieguito High School Academy – Capacity 299
 - Diegueno Middle School – Capacity 97
- Temporary Horse/Livestock Shelters
 - Oak Crest Middle School
 - San Diego County Fairgrounds
 - Diegueno Middle School

What Are We Doing Now?

Wildland Fire Training

- Annual San Diego County Wildland Drill
- Annual Olivenhain Wildland Fire Drill
- Fire Department Extended Attack Drills
- Fire Department Command and Control Drills
- North Zone and San Diego Fire Department communication training

New Technology

- Fire Defensible Space Viewer
- Zonehaven
- Tablet Command
- Drone Program

Olivenhain Fire Safe Council

- Coordinate Public Education Events (Defensible Space, Home Hardening)
- Community BBQ's with the Fire Department
- Utilize as a the Liaison for the Olivenhain Community
- Assist with the Development of a Fire Wise Community

Vegetation Management

- Work Toward 10' of Vegetation Clearance Along Evacuation Routes with a Goal of 20'
- Find additional Grant Money for Additional Vegetation Management in Drainages

Ongoing Review & Feedback

- Evacuation Plans are reviewed and updated
 - During Changes in Emergency Events/Status
 - Annually by the Leadership Team
 - Before any training that requires the use of the evacuation plan
 - After new development sites have been completed
- Community Education and Feedback
 - The fire department will work with the Olivenhain Fire Safe Council to communicate changes as well as receive feedback provided by the community.

Fitch Recommendations

Recommendations from the Olivenhain Community Evacuation Analysis December 2021

#	RECOMMENDATION	PAGE	UPDATE AS OF SEPTEMBER 12, 2022
1	Continue to support the Firewise Community concept.	6	Ongoing. Working with Fire Safe Council and contractor (Fire Prevention Services)
2	Adopt enhanced and targeted vegetation management ordinances.	6	Unchanged.
3	Enhance the defensible space inspection program.	6	Ongoing - started doing AB38 inspections in 2021.
4	Ensure Encinitas Planning Standards are aligned with a Firewise Community concept.	6	Ongoing.
5	Require new developments to design a Wildfire Mitigation Plan and a funding source to support on-going fuels management (e.g., Homeowners' Association (HOA) Covenant).	6	Done - currently, a Fire Protection Plan is required.
6	When fire weather or emerging incidents increase the probability of a wildfire threat to Olivenhain, consider the following pre-incident protective actions: <ul style="list-style-type: none"> • Advise owners to relocate large animals to pre-identified Areas of Refuge. • Suspend infrastructure projects that may impede traffic flow. 	13	Ongoing. On High Fire Days, infrastructure projects will be suspended.
7	Ensure schools, care facilities and at-risk populations are notified of the threat and review emergency plans to prepare for evacuation.	14	Done.
8	Develop a comprehensive large-animal evacuation/rescue program (Appendix F).	14	Unchanged.
9	Improve secondary egress options to the north and east, including Canyon De Oro Road and the proposed emergency exit at the end of Bumann Road.	14	Canyon De Oro Road is paved. Others - unchanged.
10	Mark the Wildfire Evacuation Route with fixed and visible signage.	14	Done.
11	Restrict traffic calming measures on all roadways used as evacuation routes.	14	Done.
12	Make Rancho Santa Fe Road improvements to reduce overall travel time.	14	Ongoing - still working on vegetation management on roadways.
13	Identify MiraCosta College as a potential Assembly Point and Reunification Location.	14	Done.
14	Adopt a Zone-Phased approach to evacuations.	15	Done.
15	Create Evacuation Zones using San Diego County map grids.	18	Done.
16	Utilize a Real Time Evacuation Planning platform (e.g., ZoneHaven).	18	In process - County is adopting ZoneHaven.
17	Develop concise and understandable pre-recorded public messages.	18	Unchanged.