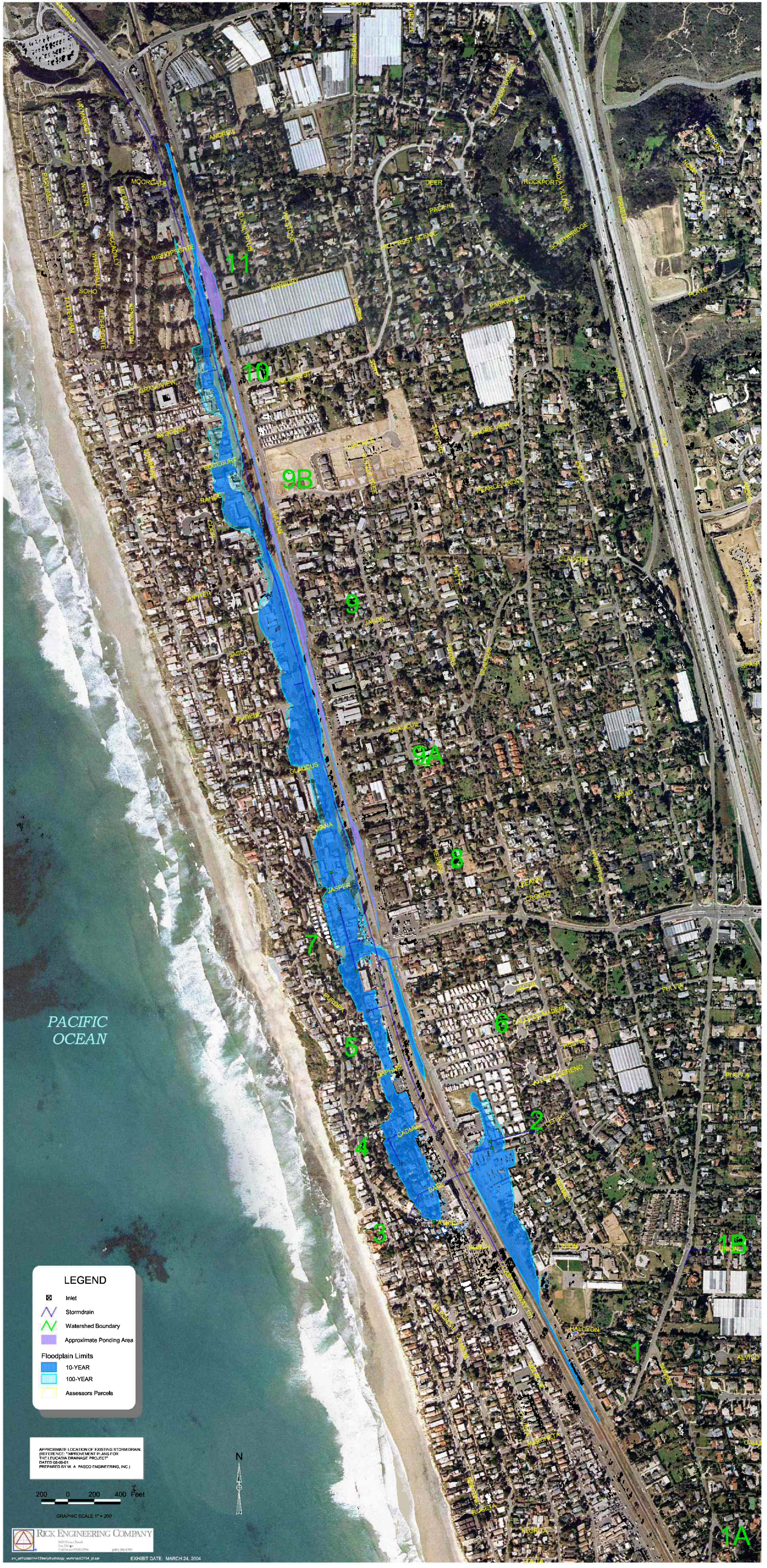




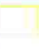
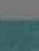



# LEUCADIA FLOODPLAIN ALONG COAST HIGHWAY 101



PACIFIC OCEAN

**LEGEND**

-  Inlet
-  Stormdrain
-  Watershed Boundary
-  Approximate Ponding Area
- Floodplain Limits**
-  10-YEAR
-  100-YEAR
-  Assessors Parcels

APPROXIMATE LOCATION OF EXISTING STORM DRAIN (SEE FIGURE 202 - IMPROVEMENT PLAN FOR THE LEUCADIA DRAINAGE PROJECT DATED 08/04/01 PREPARED BY W. A. PASCO ENGINEERING, INC.)



GRAPHIC SCALE 1" = 200'

**RICK ENGINEERING COMPANY**  
 3625 PLYMOUTH ROAD  
 SAN DIEGO, CALIFORNIA 92131  
 (619) 444-4700

EXHIBIT DATE: MARCH 24, 2004

1A