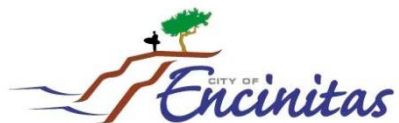




# WORKING GROUP MEETING

SEPTEMBER 13, 2017

CARDIFF/DOWNTOWN ENCINITAS/LEUCADIA  
PARKING STUDY



CHEN + RYAN

# PROJECT OVERVIEW – GOALS & OBJECTIVES

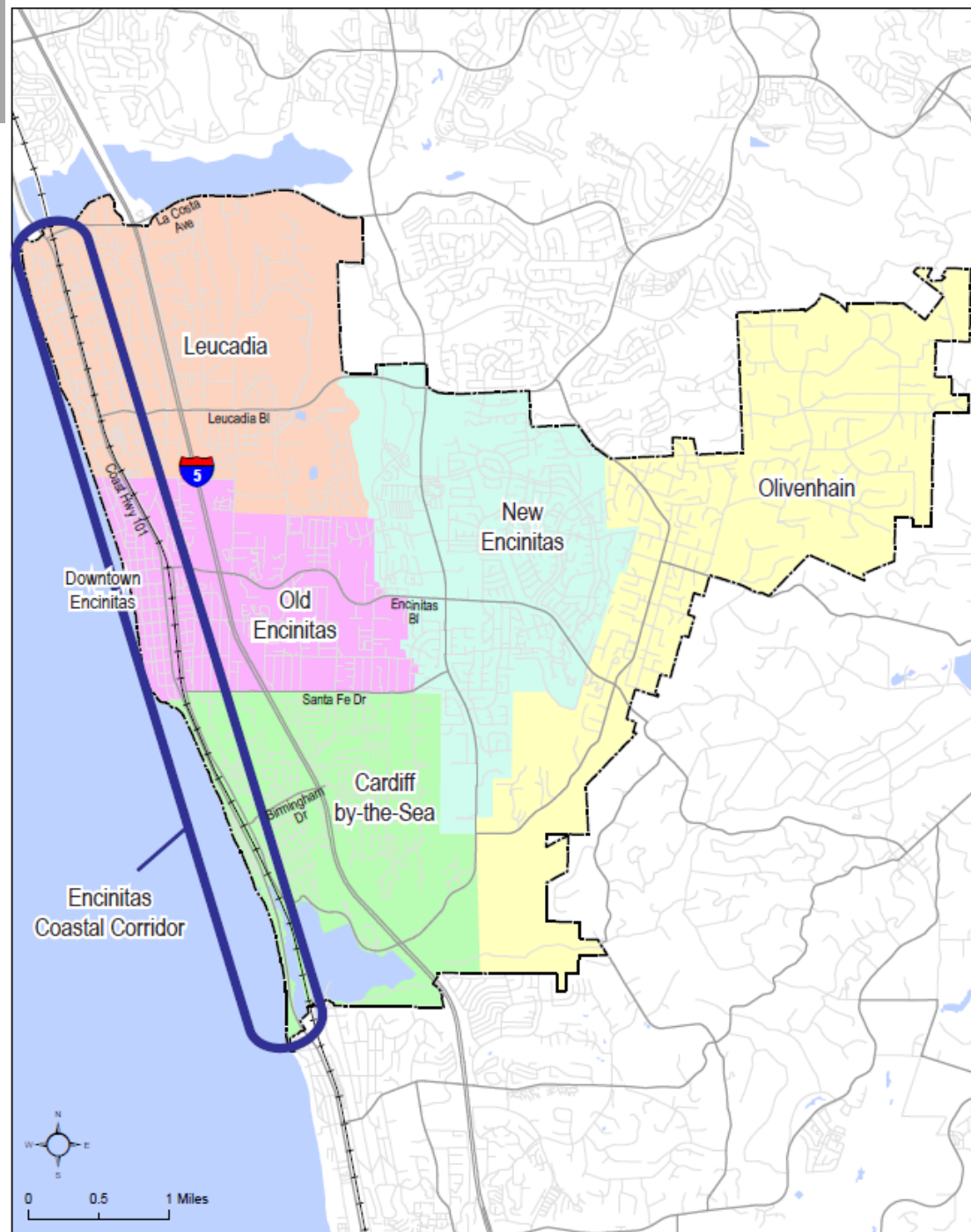
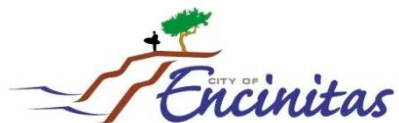
- Collect good quality data in order to answer parking related questions/concerns within the study area.
- Establish what constitutes a parking issue/problem.
- Develop flexible solutions for parking issues.
- Look at both public and private parking solutions.
- Coordinate with other planning efforts and account for shifts in mobility patterns.





# PROJECT STUDY AREA

- Coast Highway 101
- Vulcan Avenue
- San Elijo Avenue
- Downtown Neighborhood
- Leucadia Neighborhood
- Beacon Beach Parking Lot
- Moonlight Beach Parking Lot
- Swami's Parking Lot



# PARKING SUPPLY CHANGES

- **Coastal Rail Trail Project**

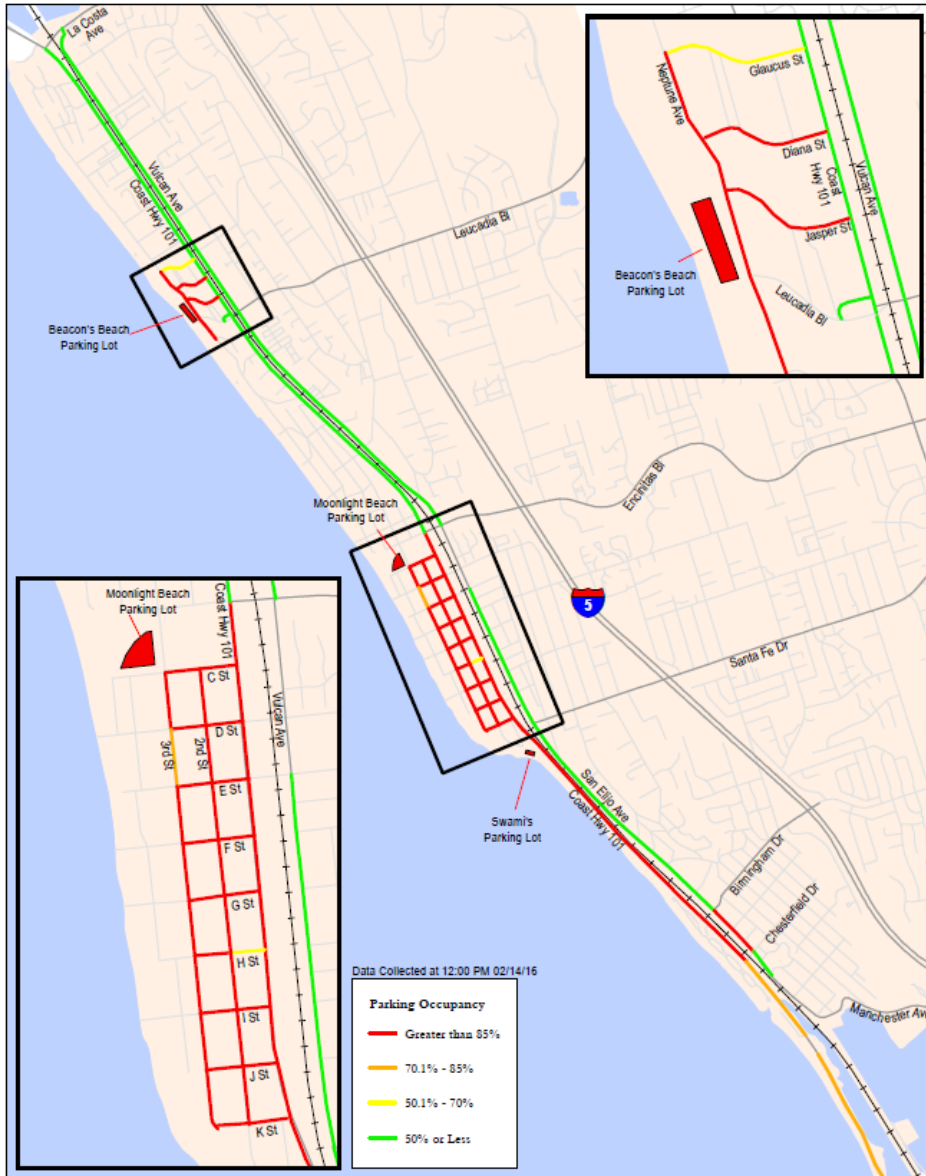
- Gain of 44 parking spaces on San Elijo Ave in Cardiff
- Loss of 139 parking spaces on Vulcan Ave in Downtown
- Loss of approximately 50% of rail right-of-way informal parking capacity on San Elijo Ave side

- **North Coast Highway 101 Streetscape Project**

- Gain of 147 parking spaces on Coast Highway 101 in Leucadia
- Loss of all rail right-of-way informal parking capacity on Coast Highway 101 side

# PEAK SUMMER WEEKEND PARKING OCCUPANCY

## Existing

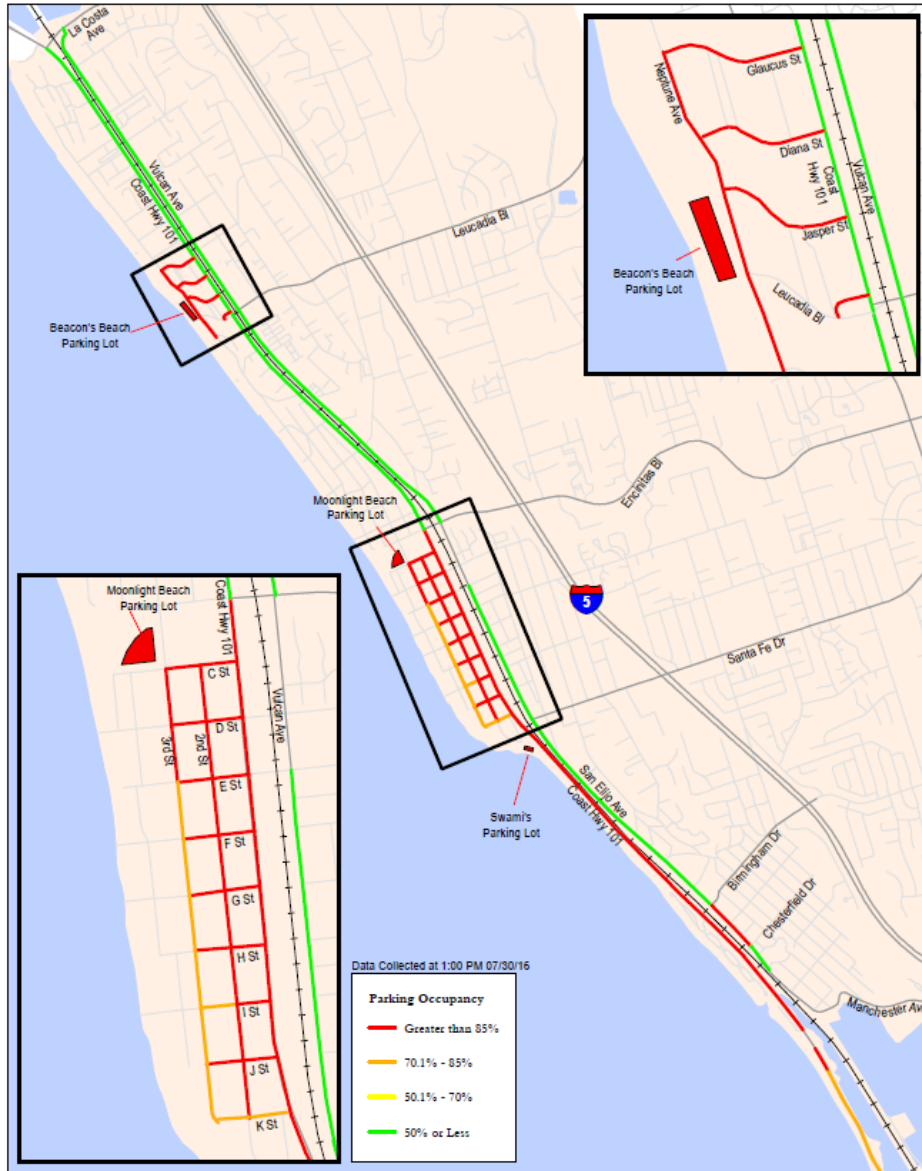


## Future



# PEAK WINTER WEEKEND PARKING OCCUPANCY

## Existing



## Future





# ISSUES

- Areas with utilization above 85%:
  - Downtown Encinitas study area west of Vulcan Ave
  - Beacon's Beach portion of Leucadia
  - Coast Highway 101 portion of Cardiff



# DOWNTOWN RECOMMENDATIONS

## ■ Near-Term

- Expand areas with 2-Hour Time Limited Parking
- Explore shared-parking arrangements with City-maintained parking lots (Beach, City Hall, Library)
- Explore shared-parking arrangements with private businesses and institutions
- Implement parallel to angled on-street parking conversion where opportunities exist along side streets to Coast Highway 101

## ■ Long-Term

- Create Parking In-Lieu fee program with eye toward acquiring land for increasing parking supply
- Conversion of some blocks of on-street parking to metered parking (which will also fund parking enforcement)





# LEUCADIA RECOMMENDATIONS

## ■ Near-Term

- Install 2-Hour Time Limited Parking in locations with retail presence
- Construction of planned grade-separated El Portal crossing will increase supply of parking within closer distance to destinations along Coast Highway 101



## ■ Long-Term

- Implementation of North Coast Highway 101 Streetscape Project will provide an additional 147 formal parking spaces along Coast Highway 101 in Leucadia

# CARDIFF RECOMMENDATIONS

## ■ Near-Term

- Implementation of Coastal Rail Trail project will provide an additional 44 formal parking spaces and improve walking and bicycling conditions
- Potential crossing at Verdi Ave or Montgomery Ave, will make parking along San Elijo Ave parking supply more accessible to Cardiff State Beach



## ■ Long-Term

- Implementation of North Coast Highway 101 Streetscape Project will provide an additional 147 formal parking spaces along Coast Highway 101 in Leucadia



# QUESTIONS & ANSWERS





# PARKING SUPPLY CHANGES

## Locations with Supply Changes



## Future Parking Supply

